

HADLEIGH
RESIDENTIAL



GLENLOCH ROAD, NW3

£1,841 PCM

SPLIT LEVEL APARTMENT | PERIOD CONVERSION | WOODEN FLOORS THROUGHOUT | FIRST AND SECOND FLOORS |
480 SQ. FT. | MODERN OPEN PLAN KITCHEN | MODERN BATHROOM

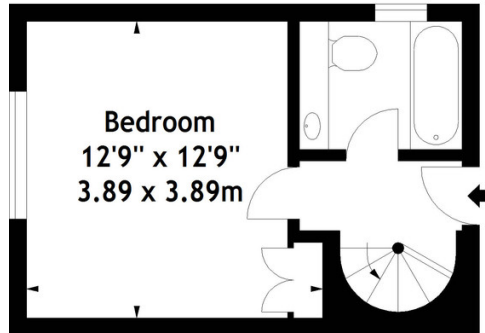


DESCRIPTION

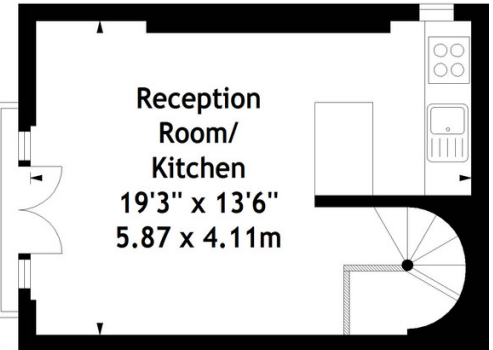
A modern one bedroom split level apartment to rent arranged over the first and second floors of this period conversion which is ideally positioned for Belsize Park underground station and all the amenities offered on Haverstock Hill. The apartment has wooden floors throughout and comprises bright reception room with Juliet balcony, modern open plan kitchen, generous double bedroom and modern bathroom with bath and shower.

Offered furnished and available from the 1st March.

Glenloch Road, NW3
Approx. Gross Internal Area
480 Sq Ft - 44.59 Sq M



First Floor



Second Floor

Measured in accordance with RICS guidelines. Every attempt is made to ensure accuracy, however all measurements are approximate. This floor plan is for illustrative purposes only and is not to scale.

© Datography Ltd 2017

Photographs * Floorplans * Virtual Tours
Tel: 0845 643 4401 www.datography.com