

HADLEIGH
RESIDENTIAL



ROMNEY COURT, HAVERSTOCK HILL, **NW3**

£399,950 LEASEHOLD

ROMNEY COURT, HAVERSTOCK HILL, NW3

£399,950 LEASEHOLD

ONE BEDROOM APARTMENT | BRIGHT SOUTHERLY ASPECT | CIRCA 356 SQ FT | SPACIOUS 19' RECEPTION ROOM | OPEN PLAN KITCHEN | BATHROOM | DOUBLE GLAZED WINDOWS | LIFT | COMMUNAL GARDEN | PARKING

DESCRIPTION

Offered in good decorative condition is this bright south facing one bedroom apartment set on the fourth floor of this popular and well located purpose built block in Belsize Park. The apartment, which is circa 356 sq ft, boasts an impressive 19' reception room with open plan kitchen, bedroom area and modern bathroom suite. Other attractive features include wood laminate flooring, newly fitted double glazed windows, lift, off street parking (available on a first come first serve basis) and a communal garden. Ideally located just a few hundred yards from Belsize Park underground station and the many local shops, cafes and restaurants located on Haverstock Hill and Englands Lane.

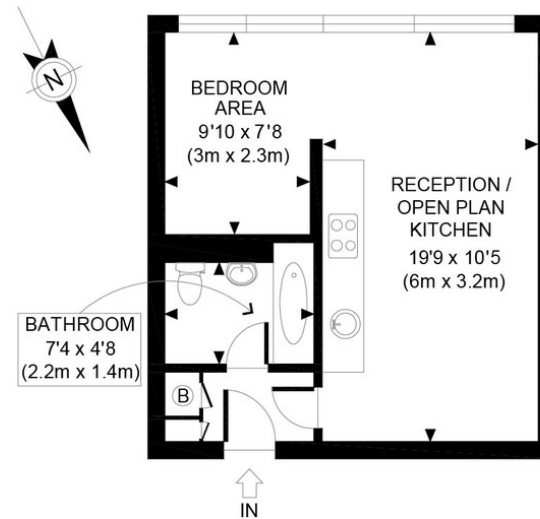


HADLEIGH RESIDENTIAL

INTERNAL AREA:
356 SQ FT / 33 SQ M

For clarification, we wish to inform prospective purchasers that we have prepared these sales particulars as a general guide. We have not carried out a detailed survey, nor tested the services, appliances and specific fittings. Room sizes are approximate and rounded: they are taken between internal wall surfaces and therefore include cupboards/shelves, etc. Accordingly, they should not be relied upon for carpets and furnishings. Formal notice is also given that all fixtures and fittings, carpeting, curtains/blinds and kitchen equipment, whether fitted or not, are deemed removable by the vendor unless specifically itemised within these particulars.

Energy Efficiency Rating		Current	Potential
Very energy efficient - lower running costs			
(92-100) A			
(81-91) B			
(69-80) C			76
(55-68) D			
(39-54) E		40	
(21-38) F			
(1-20) G			
Not energy efficient - higher running costs			
England & Wales		Directive 2002/91/EC	



FOURTH FLOOR
GROSS INTERNAL
FLOOR AREA 356 SQ FT



APPROX. GROSS INTERNAL FLOOR AREA 356 SQ FT / 33 SQ M

Ref: HR

Copyright **photoplan**

Disclaimer: Floor plan measurements are approximate and are for illustrative purposes only. While we do not doubt the floor plan accuracy and completeness, you or your advisors should conduct a careful, independent investigation of the property in respect of monetary valuation

